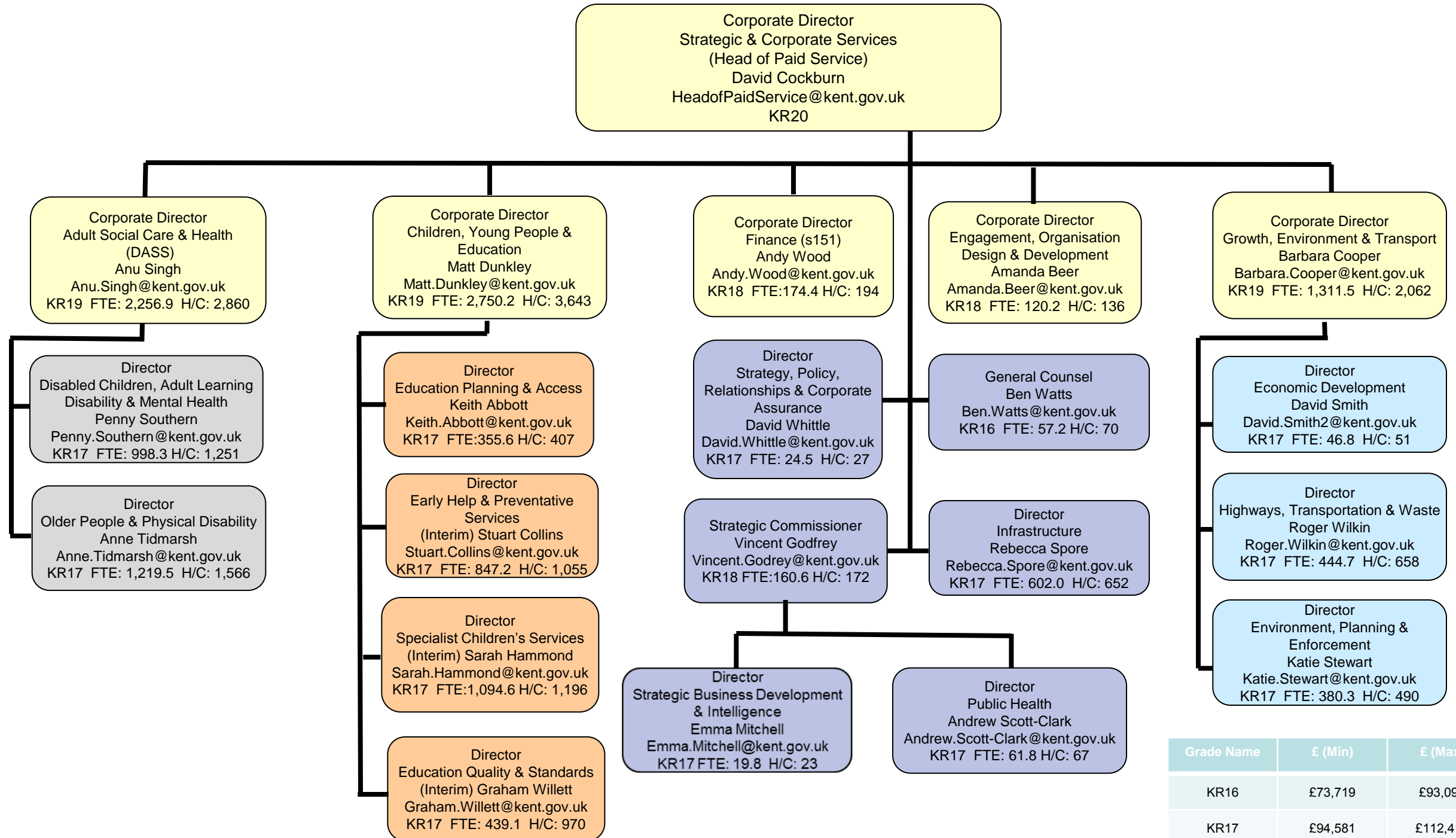


# Leader Cabinet



KEY:  
FTE – Full Time Equivalent  
H/C - Headcount

Structure as at 1 December 2017  
Staffing Numbers from Oracle HR as at 31 Oct 2017

Grade Name	£ (Min)	£ (Max)
KR16	£73,719	£93,095
KR17	£94,581	£112,415
KR18	£118,466	£140,864
KR19	£140,865	£193,000
KR20	£194,000	£199,000